

## ROBINSONS Cybergate Plaza

*Robinsons Cybergate Plaza is one of the most awaited additions to RLC's Robinsons Pioneer mixed-use complex. Comprised of six office floors, two budget hotel floors, and two commercial/retail floors, Cybergate Plaza is truly a one-stop location for corporate professionals and businessmen.*



Robinsons Cybergate Plaza

*The project boasts of its superior location due to its EDSA frontage. Its tenants can benefit from the synergy created among the different*



*structures within the complex, like walking across to shop for gadgets or dine at Robinsons Forum, rest and relax at the hotel's facilities, or opt to live at the adjoining residential projects like Robinsons Gateway Garden Ridge and Gateway Garden Heights.*

*Robinsons Cybergate Plaza is thus the premier choice for location, quality, up-to-date and newest facilities in one office building. Its prime location is situated at the heart of the busy Metropolis, with easy access to both the Makati and Ortigas CBDs.*



## ROBINSONS Cybergate 3

*Just like its predecessors, Robinsons Cybergate Center Tower 3 was designed to cater specifically to all kinds of Business Process Outsourcing service providers, including voice based, non-voice based, and IT-intensive companies. Located at the eastern end of the mixed-use Robinsons Pioneer complex in Mandaluyong City, it is easily accessible via private and public transportation. Completed in mid-2008, this project is a 27-storey, BPO-friendly designed office building with a gross leasable area of approximately 40,000 square meters.*



Robinsons Cybergate 3





The Wellington Courtyard



Robinsons Hillsborough Pointe



The Centennial Place

## Housing and Land Development Division

*We build communities that provide residents with a safe, comfortable, and happy environment.*

**T**he Housing and Land Development Division maintains its stature as one of the leading developers in the country since Robinsons Land's entry in the mass housing development in 1995. The Division continues to trail blaze in key cities and municipalities of the three main islands by building residential subdivisions as well as affordable mid-rise condominiums.

Quality remains the mark of Robinsons Homes projects, with more than 10,000 households and residential lots counted as part of the growing Robinsons communities. Every project comes with complete facilities and recreational amenities for the enjoyment of every family member. Filipinos, whether residing domestically or overseas, are able to purchase their dream home through the division's efforts of delivering affordable house and lot packages in conjunction with flexible payment schemes from partner financial institutions.

### CURRENT PROJECTS

- **Robinsons Homes East** Antipolo City
- **San Lorenzo Homes** Antipolo City
- **San Jose Estates** Antipolo City
- **Centennial Place** Quezon City
- **Brighton Parkplace** Laoag City
- **Southsquare Village** General Trias, Cavite
- **Manchester Midlands in Grosvenor Place** Tanza, Cavite
- **Robinsons Vineyard** Dasmariñas, Cavite
- **Bloomfields Tagaytay** Tagaytay City
- **The Wellington Courtyard** Tagaytay City
- **Robinsons Residenza Milano** Batangas City
- **Forest Parkhomes** Angeles City, Pampanga
- **Fernwood Parkhomes** Mabalacat, Pampanga
- **Rosewood Parkhomes** Angeles City, Pampanga
- **Mirada Dos** San Fernando City, Pampanga
- **Blue Coast Residences** Mactan Cebu

- **Robinsons Highlands** Davao City
- **Bloomfields Davao** Davao City
- **Robinsons Hillsborough Pointe** Cagayan de Oro City
- **Richmond Hills** Cagayan de Oro City
- **Fresno Parkview** Cagayan de Oro City

### UPCOMING PROJECTS

- **St. Bernice Estates** Antipolo City
- **Escalades at 20th Avenue** Cubao City
- **Brighton Parkplace North** Laoag City
- **Hanalei Heights** Laoag City
- **Sitio Andalucia** Bantay, Ilocos Sur
- **Forest Parkhomes North** Angeles City, Pampanga
- **Aspen Heights** Consolacion, Cebu
- **Monte Del Sol** El Salvador, Misamis Oriental
- **Montclair Highlands** Davao City

## **THE WELLINGTON** *Courtyard*

*Experience country living with modern city conveniences*

Located on a prime property along Mahogany Road corner Mayor's Drive in Tagaytay City, The Wellington Courtyard is one of RLC—HLDD's most promising projects. This 5-building low-rise condominium residence will be developed on a 9,365-square meter property, right beside a planned future commercial strip. Its superior location in the cool mountain city, also allows easy access to basic community amenities such as gasoline stations, clinics, police stations, and convenience stores, for the security and comfort of future residents.

*American Country Style design blends European-inspired Central Courtyard*

The project will feature American country-style architecture, with earth colors, warm hues, terra cotta finishes, perfectly complementing the rustic surroundings that Tagaytay offers. The master plan will feature a European-inspired central courtyard where future residents can enjoy the first rate amenities, that include a swimming pool, multipurpose clubhouse, children's play area, picnic area, gazebo, bird's fountain, and administration office.

*Luxury living within reach*

The Wellington Courtyard offers flexible payment schemes made available through packages created by partner banks, government financing institutions, and in-house financing. The pre-selling business model allows buyers to pay their equity in affordable monthly downpayments.

## **ST. BERNICE** *Estates*

St. Bernice Estates is a 3.5-hectare expansion development of San Jose Estates, along the Antipolo-Teresa Highway in Brgy. San Jose, Antipolo City. The place is only an hour drive from the Ortigas Central Business District, making it easy for residents to go to work or visit their favorite shopping malls like Robinsons Galleria.



St. Bernice Estates

The mid-market residential subdivision will showcase contemporary architecture and buyers are being offered a choice of subdivision lots or cozy townhouses. The new development will have its own gate and guardhouse, multi-purpose court, pocket parks, children's play area, function hall, swimming pool, and perimeter fence. Mid-income, start-up families, and overseas Filipino workers who want to put their hard-earned money into a worthwhile investment are expected to be interested in the new project.





Crowne Plaza Galleria Manila



Holiday Inn Galleria Manila



Seven Corners

## Hotels Division

*We provide excellent venues for accommodation and special events with the highest standards of quality and service.*

**A**s of September 2008, RLC's Hotels Division owns and operates three hotels—IHG-managed Crowne Plaza Galleria and Holiday Inn Galleria hotels in Ortigas Business District, and the RLC-managed Cebu Midtown Hotel. To add to the division's portfolio, the group is about to complete the construction of a 108-room resort hotel in Tagaytay City and a 200-room budget hotel in the Cybergate Complex in Mandaluyong City slated for opening in the year 2010.

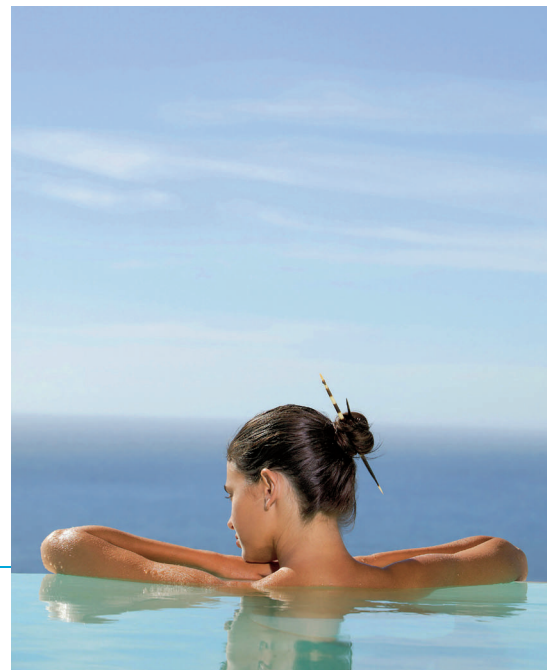
The division's portfolio offers fresh approaches to rediscovering Filipino hospitality with its warm, friendly and caring staff, high tech hotel facilities, comfortable and relaxing room amenities and a superb choice of international and local cuisine.

Despite the adverse effects of global recession on business and leisure travel, the Hotels Division sustained growth in both revenues and profits through its effective revenue and cost management systems.

- **Crowne Plaza Galleria Manila** Quezon City
- **Holiday Inn Galleria Manila** Pasig City
- **Cebu Midtown Hotel** Cebu City
- **Summit Ridge Hotel\*** Tagaytay City
- **GO Hotel Cybergate\*\*** Mandaluyong City

\* Completion in early 2009

\*\* Completion in 2010



## SUMMIT RIDGE Hotel



Summit Ridge Hotel

Located at KM 58 Maharlika West, General Aguinaldo Highway, Tagaytay City, approximately 3 kms from the Tagaytay Rotonda, the Summit Ridge Hotel showcases the important attributes of Modern Asian style of interior design which is a traditional look with the convenience and technology of the present times. This 108-room Hotel with facilities such as Ballrooms, Function and Training Rooms, Events Lawn, a view deck, Auditorium,

Restaurant and Al Fresco dining, heated Swimming Pool, Gym, and Spa are just some of the luxuries the guests can enjoy during their stay here at the Summit Ridge Hotel. Between the Hotel wings are scenic elevators. All guestrooms will feature balconies so hotel guests can enjoy the all-year round cool climate and a breathtaking panoramic view of Taal Lake. Soon to open, Summit Ridge Hotel will be one of Tagaytay City's landmarks which will be a sought after refuge from the bustle of the Metro.



## GO Hotels

RLC is also set to introduce a new concept in the hospitality business that will offer affordable and value-for-money accommodation. Go Hotels will become the preferred budget hotel choice of value-conscious individuals, from businessmen and backpackers. These hotels will be set in the mixed-use complexes of Robinsons Land, usually beside a mall.

Incorporating the idea of clean, smart and fun, the hotels will boast of comfortable beds, clean bedroom and bathrooms, free WIFI access, flat-screen televisions, and other basic and practical room amenities. Go Hotels will engage a 24hr convenience store in each site to sell

basic toiletries, snacks, drinks, etc. that guests may need from time to time. The construction of these alternative hotels is in line with Robinsons Land's commitment to deliver quality and value-for-money products and services to support the growing Filipino community.

